

MAKE BOOK JACKET 6.3 USER GUIDE

A Script for Adobe InDesign

Overview, System Requirements & Screenshots	PG 2
Examples & Terminology	PG 3
How to Install	PG 4
Using Make Book Jacket	PG 5
Description of Features	PG 6
FAQs & Tips	PG 7
Dealing with Preferences	PG 8
Licensing & Legal	PG 9

Dan Rodney: Empowering People Through Technology



Certified Instructor



Certified Expert

Make Book Jacket Overview

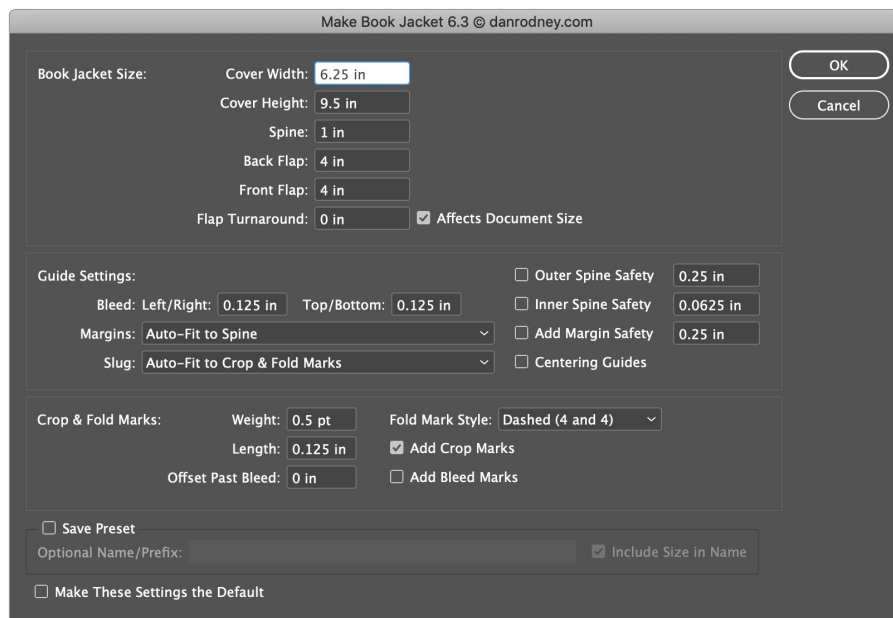
Enter your measurements for flaps, cover, and spine, etc. and Make Book Jacket will create a new InDesign document for you, properly measured and complete with guides, bleed, crop/fold marks and more. The tedious work that used to take minutes of “careful” measuring now takes seconds, with perfect accuracy.

What’s even more amazing, is that you can edit the jacket’s sizes after the file has been created. Now you can change the spine size and more!

There are easy to use preferences that let you control the final book jacket, but even if you don’t customize them, the default settings will produce a great jacket.

Main Window: Create a New Book Jacket

Inches version shown. Millimeters & Picas versions are also included.

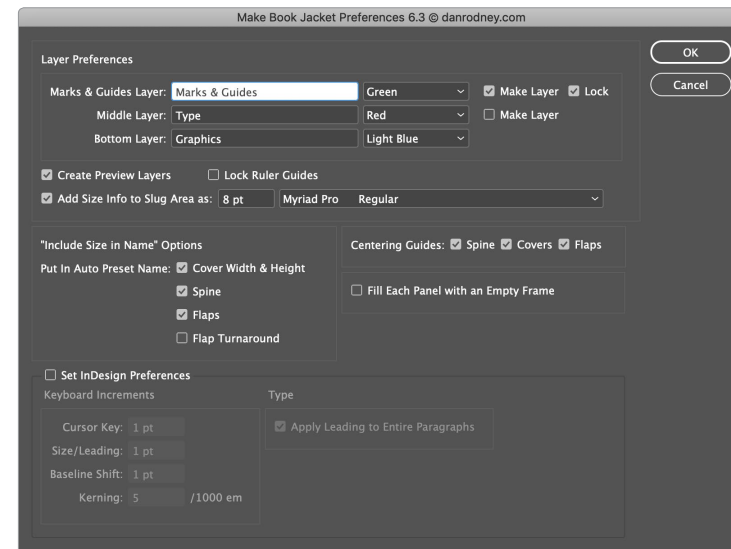


Requires Adobe InDesign for Mac or PC

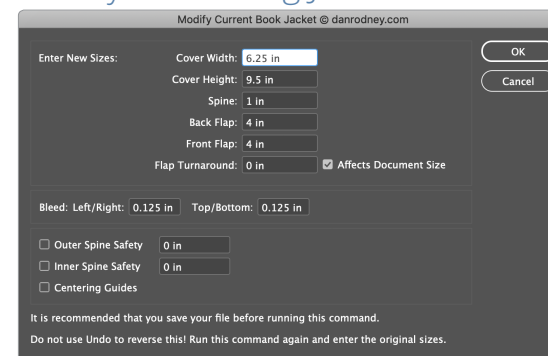
Make Book Jacket works inside of InDesign CS4 or later (tested through CS6 and Creative Cloud CC 2019).



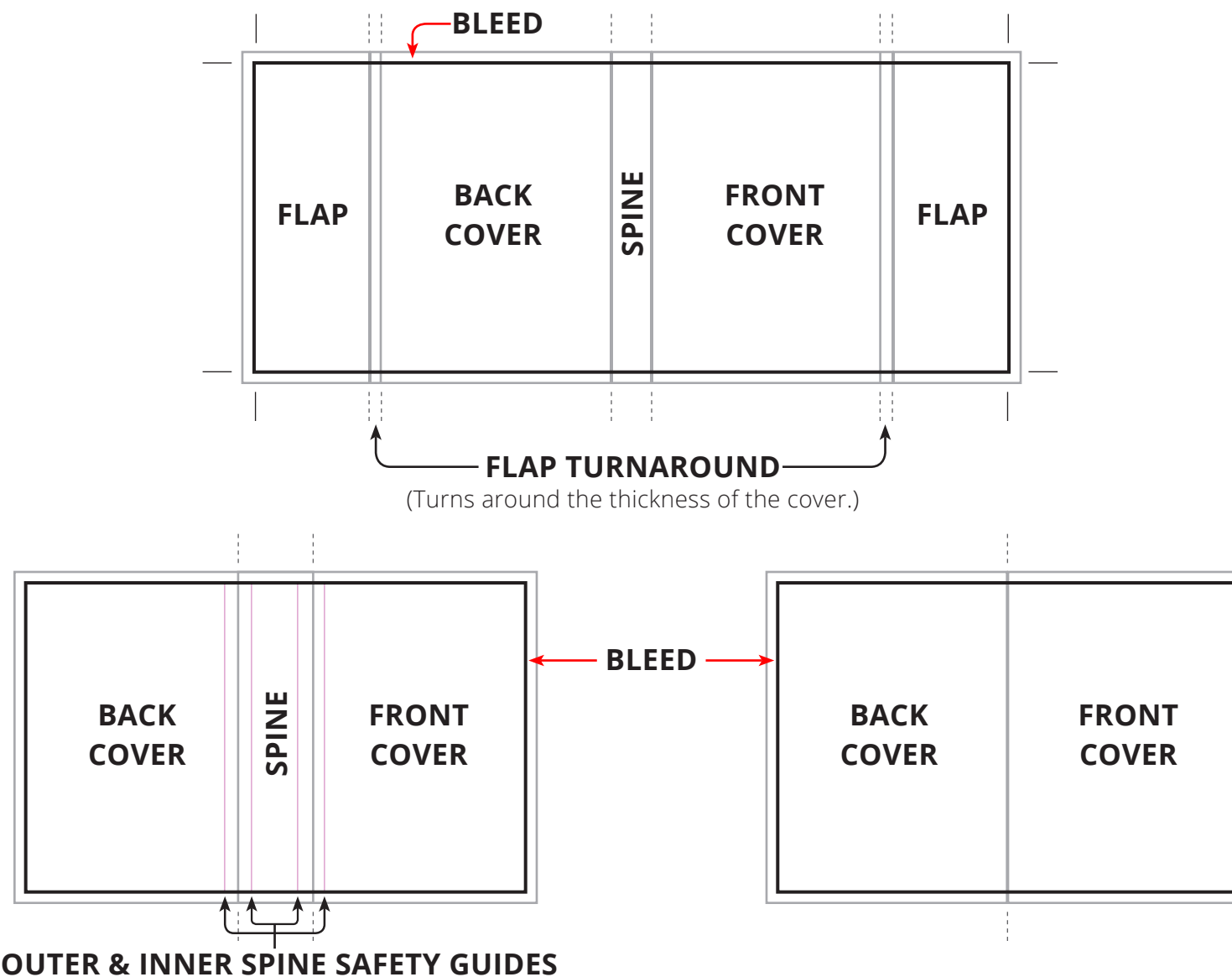
Preferences



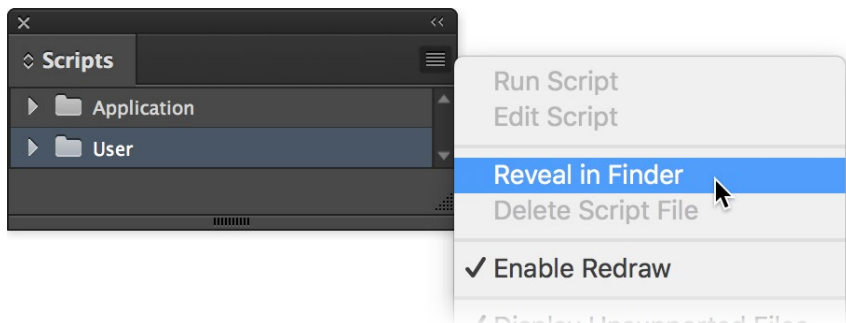
Modify An Existing Jacket



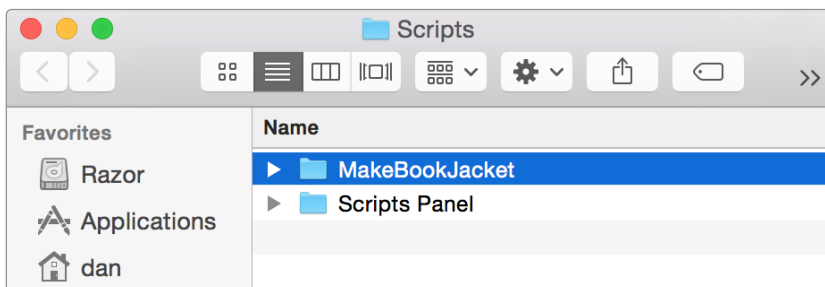
A Few Examples of What You Can Make



1. To install Make Book Jacket, open InDesign's **Scripts** panel by going into the **Window** menu and choosing **Utilities > Scripts**.
(In InDesign CS4 choose **Window > Automation > Scripts**.)
2. In the **Scripts** panel you'll see **Application** and **User** folders. Scripts can be installed into either, but only admins can install into the **Application** folder. If you're not an admin (or aren't sure), choose the **User** folder. With one of the folders selected, **at the top right** of the panel go into the menu and choose **Reveal in Finder** (Mac) or **Reveal in Explorer** (PC).



3. You should now be in the **Scripts** folder. Drag the **MakeBookJacket** folder into the **Scripts** folder (so it appears as shown below).
Do NOT put it into the **Scripts Panel** folder as prior versions did!



4. Quit InDesign.
5. Relaunch InDesign and a new **Jacket** menu should appear to the right of the **View** menu. All the features are found in this **Jacket** menu. Enjoy!

Scripts Folder Location

Curious where the **Scripts** folders are located?

Mac

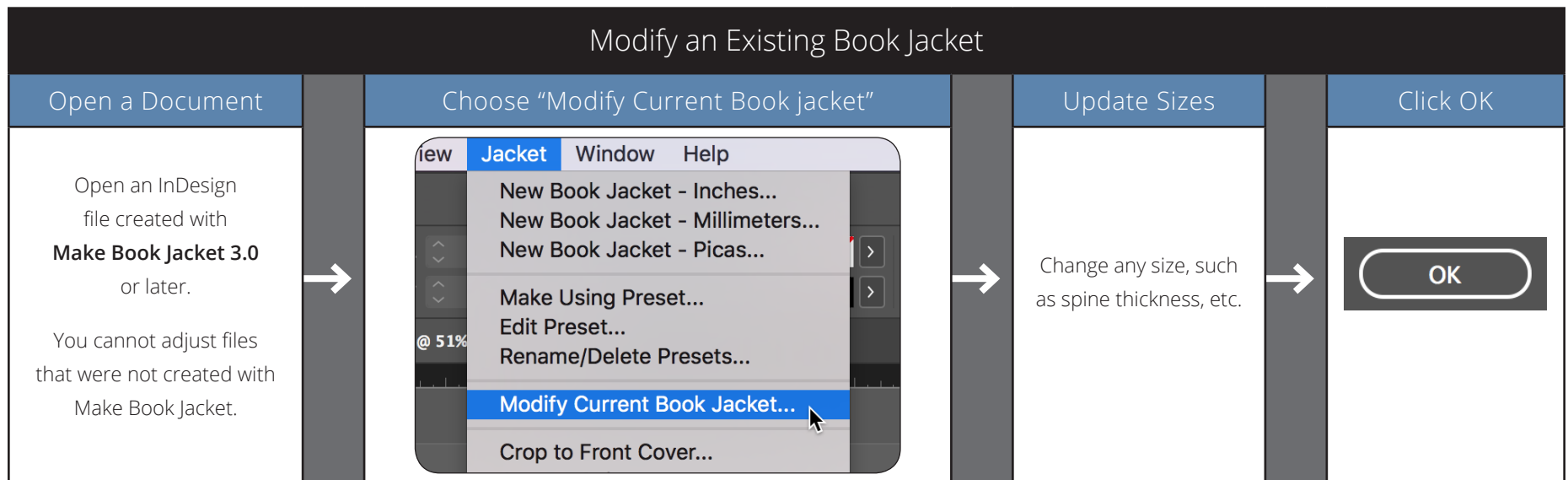
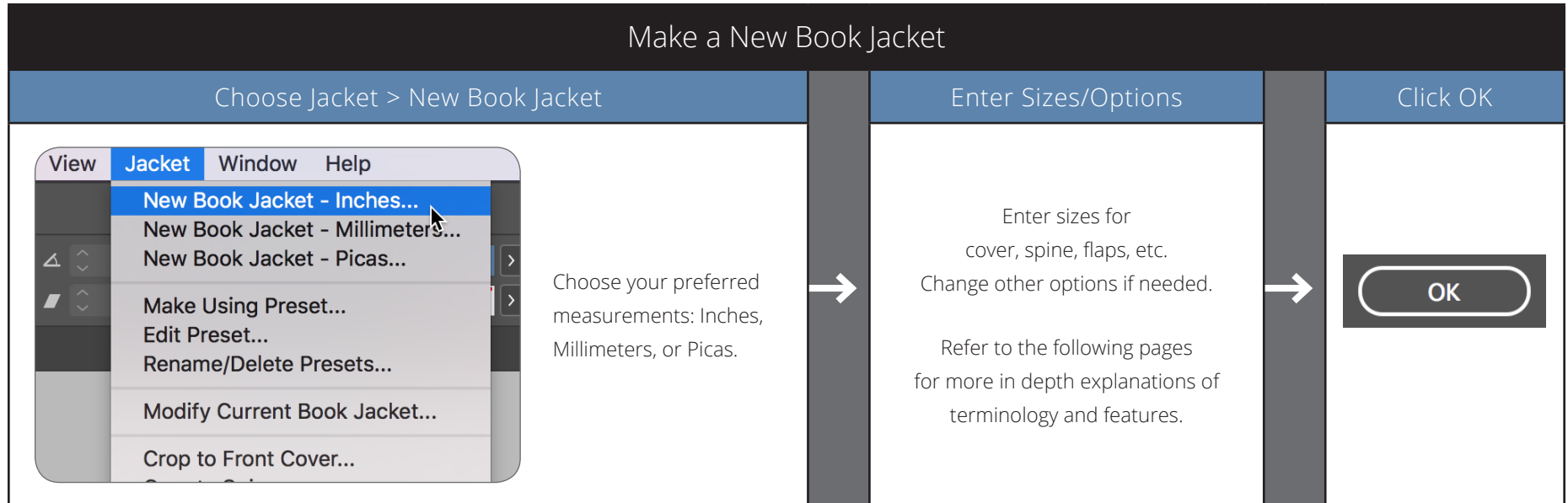
- **Application Folder:** Hard Drive > Applications > Adobe InDesign [version number] > Scripts
- **User Folder:** Hard Drive > Users > [username] > Library > Preferences > Adobe InDesign > Version X.X > Scripts

Windows 10, 8, 7, & Vista

- **Application Folder:** C:Drive > Program Files > Adobe > Adobe InDesign [version number] > Scripts
- **User Folder:** C:Drive > Users > [username] > AppData > Roaming > Adobe > InDesign > Version X.X > [en_US or other language] > Scripts

Windows XP

- **Application Folder:** C:Drive > Program Files > Adobe > Adobe InDesign [version number] > Scripts
- **User Folder:** C:Drive > Documents and Settings > [username] > Application Data > Adobe > InDesign > Version X.X > [en_US or other language] > Scripts



Flap Turnaround

The area where the cover folds around the thickness of the cover material and becomes the flap is called the **Flap Turnaround**. If **Affects Document Size** is checked, the turnaround width will be added to the document size (between the flap and cover). If **Affects Document Size** is unchecked, the document size will not be increased. Instead, guides will be added around the flap/cover fold line. Half of the turnaround width would be on the flap, and the other half on the cover.

Guides

Because guides can be moved or deleted accidentally while working, guides and fold/crop marks are put onto a separate layer which is locked. The other reason they are put onto a layer is to keep the marks on top of everything, so they never get covered up by the jacket's artwork. If you don't want to put them on a separate layer, in the **Preferences** dialog uncheck **Make Layer** to the right of the **Marks & Guides Layer** name. You can also turn off the auto locking of that layer if desired.

To edit the guides and/or marks of an existing jacket file, choose **Jacket > Modify Current Book Jacket**. If you want to manually change the guides, unlock the **Marks & Guides** layer in the **Layers** panel (**Window > Layers**), but the **Modify** command is the recommended way to change them.

Margin Guides

To set custom margins, in the **New Book Jacket** dialog, choose **Custom Margins**. Click **OK** and you will be presented with a second dialog. Enter your custom margins and click **OK** again. The jacket will be created.

Slug Guides

By default the slug guides automatically fit to include the fold marks. This makes printing the jacket with fold marks easy. Go into **File > Print** and in the **Marks and Bleed** section (on the left) check on **Include Slug Area**. The entire jacket, bleed and fold marks will be printed.

To set a custom slug area, in the **New Book Jacket** dialog, choose **Custom Slug**. Click **OK** and you will be presented with a second dialog. Enter your custom slug amounts and click **OK** again. The jacket will be created.

Fold Marks

Fold Marks are automatically added for the flaps and spine. They are a dashed rule but can be changed to dotted in the **New Book Jacket** dialog where length and stroke weight can also be changed. By default the slug guides auto-fit to include the fold marks. Therefore when you go to **File > Print**, in the **Marks and Bleed** section you can check on **Include Slug Area** to include the fold marks in the print out.

Crop Marks

Crop Marks use the same weight, length and offset settings as fold marks except they are a solid line instead of dotted. If you prefer to use InDesign's built in crop marks instead, just uncheck **Add Crops Marks**.

Fill with Empty Frames

This option is turned off by default, but each section (spine, front cover, etc.) can be filled with an empty frame. These frames can contain color, pictures, text, etc. To enable this feature go into the **Preferences** and check on **Fill Each Panel with an Empty Frame**.

Q. What is a Flap Turnaround?

- A. This is where the cover folds, turns around the thickness of the cover material, and becomes the flap. By default, the turnaround size is added to the overall dimensions of the jacket. Unchecking **Turnaround Affects Document Size** makes it act more like a safety zone around the flap fold. In this case the turnaround does not affect document size. Half of the turnaround area is on the flap, the other half is on the cover.

Q. Must I have a Flap Turnaround?

- A. No, just make it **0 (zero)** to get one guide/set of fold marks between the flap and cover instead of the two that would be there with a turnaround.

Q. What if I don't want flaps?

- A. Just enter **0 (zero)** for both front and back flaps. No guides or fold marks will be created for flaps.

Q. Must I have a spine thickness?

- A. No, some jackets have no spine because they just fold where the covers meet. Just enter **0 (zero)** for the spine.

Q. What are Slug Guides? Why and how are you using them?

- A. They are another set of guides similar to bleed guides. The slug area is often filled with info such as job information, printing info, editorial approval, etc. I am using the slug guides just as an extra set of guides, auto-fitting them to an area that includes the fold marks. This lets you quickly choose whether or not you want them included in a print out or PDF. See the tip on the right for more info on how.

Q. Why can't I edit the marks and guides?

- A. By default they are placed on a locked layer. You must unlock the layer before you can edit the contents: Go into the **Layers** panel (**Window > Layers**). Then click the lock next to the **marks & guides** layer. If you don't want this layer locked, choose **Jacket > Preferences** and uncheck **Lock Marks & Guides** Layer.

Q. Can I change the default settings in the main window?

- A. Yes. Choose **Jacket > New Book Jacket**. Enter the options you want and at the bottom of the dialog check on **Make These Settings the Default** and click **OK**. A jacket will be created, but your default settings have also been saved. If you don't want the book jacket, just close the document without saving changes.

Tip: Viewing

Switch into **Preview** mode (**Window > Screen Mode > Preview**). Then open the **Layers** panel and show the appropriate **Preview** layer to view a section of your jacket in isolation. For instance you can look at just the spine, or just the front cover. This is how your audience will see the jacket on a book shelf! When done with one preview layer, hide it and show another **Preview** layer.

TIP: Speed It Up With a Keystroke

You can assign a keyboard shortcut to the various features. Then you can hit the keystroke instead of using the **Jacket** menu.

- Go into the **Edit** menu and choose **Keyboard Shortcuts**.
- From the **Product Area** menu choose **Scripts**.
- In the list select a feature such as **New Book Jacket - [measurement]**.
- Towards the bottom click in the empty field under **New Shortcut**.
- Press the desired keys, such as **Option-J** (Mac) or **Alt-J** (PC).
- Click **Assign**, then click **OK**.

TIP: Printing & Making a PDF

To print the jacket (or make a PDF) with bleed and fold marks: In the **Print** (or **PDF**) dialog's **Marks and Bleed** section check on **Include Slug Area**. Please Note: This assumes you left **Slug: Auto-Fit...** checked in the **New Book Jacket** dialog when you originally created the jacket.

Restoring Original Preferences & Default Settings

Feel free to experiment with the default settings and preferences, knowing that they can be reset to “factory defaults.” Preference files are stored in:

MakeBookJacket > User Preferences and Presets > Default Settings

To open this folder go into the **Jacket** menu and choose **Rename/Delete Presets**. Click the **Show in Finder** (Mac) or **Show in Explorer** (PC) button.

In the **Default Settings** folder you will find .txt files for each of the 3 types of measurements (inches, millimeters and picas). There may also be two other preference files. Delete any of these text files and Make Book Jacket will recreate clean files as needed.

Explanation of Preference Files

MakeBookJacketDefaults-[measurement].txt

These three files store the default settings you see in the **New Book Jacket** dialogs. These include default sizes, bleed and mark settings, etc. These settings files get updated whenever a user checks on **Update Default Settings** in the **New Book Jacket** dialog.

Preferences.txt

When you choose **Jacket > Preferences**, the changes are saved into this file. This includes settings such as layer setup, InDesign Preferences, etc.

MakeUsingPresetDefaults.txt

This file isn't too important. It remembers whether the **Make Using Preset** dialog has the **Show the Main Settings Dialog** option checked on or not. This “sticky” setting is saved here.

CropCoverDefaults.txt

This file isn't too important. It remembers which option is selected for **Crop to Front/Back Cover**. This “sticky” setting is saved here.

For System Admins and Advanced users

Make Book Jacket is designed for use by individual users as well as multiple users in a company. When the default settings have been deleted, the “factory settings” will be restored. Some users—especially companies with multiple users—may want to customize those “factory defaults.” First you must understand a few things. The “factory defaults” are stored in: **MakeBookJacket > Make Book Jacket Core > Factory Default Settings**

Here's how preference restoration works: First you delete a preference file in the **Default Settings** folder. Then when you run Make Book Jacket, you will be alerted that the default settings have been restored. This means Make Book Jacket has copied the appropriate file from the **Factory Default Settings** folder back into the **Default Settings** folder, thus restoring the “factory defaults.”

If you set your desired default settings and preferences, those settings are saved into the **Default Settings** folder. To customize the “factory defaults” you can copy your files from the **Default Settings** folder into the **Factory Default Settings** folder. Later if a user deletes the files in **Default Settings**, your custom “factory defaults” will be restored.

Purchasing

Visit <https://www.danrodney.com> or email dan@danrodney.com

Single-User License

Allows an individual to install and use Make Book Jacket on as many machines as he/she works on. It is not to be used by multiple persons. Only the person who purchased the license has the right to use it. Multiple installed copies cannot be used concurrently. Since there is only one licensee, he/she can only be using one copy at a time. This license is nontransferable.

Multi-User License

Allows a company, organization, household, etc. to install and use Make Book Jacket on multiple machines. The number of copies that can be installed and used concurrently depends on the number of licenses purchased. This license is nontransferable.

Terms of Use (Boring Legal Stuff)

Use of **Make Book Jacket** is subject to the following terms:

Make Book Jacket is the sole property of Dan Rodney (Copyright © 2005–2018).

Make Book Jacket is NOT to be distributed freely.

No part of the script files can be used and/or redistributed as your own.

In other words: “Please don’t steal my hard work!” 🙄

While I have tested it to the best of my ability and know it to work as I intended, like any software there may be bugs that I have yet to find. It is provided “as is” with no guarantee of specific functionality. I recommend that you save frequently and keep backups of your documents. I am not responsible for any damages or liabilities incurred by the use of this product.

In other words: I’ve worked hard to make sure things should work fine, but in case I made a boo-boo please don’t sue me.

